

USB GPS Module

This USB GPS Module works with windows, mac, linux, android , Raspberry pi and some cars.

Android driver link

<https://tinyurl.com/ublox-android-driver>

Ublox u center software

<https://www.u-blox.com/en/product/u-center>

Mac, linux and raspberry pi , no need driver

Raspberry pi setup link

<https://youtu.be/A1zmhxcUOxw>

USB Sensor driver for WIN10

https://drive.google.com/file/d/1-JpDYWVp_NgZblmlllu-1Am4LzWyFDvA/view?usp=drive_link

1. Download u center from <https://www.u-blox.com/en/product/u-center>
choose For M9 products and below: Download u-center,v22.02
You can download u center user guide too

u-blox

Products & Services Solutions Support Company

workspaces

- Powerful logging functionality for efficient development support
- Easy evaluation of u-blox GNSS services

For M10 products only:

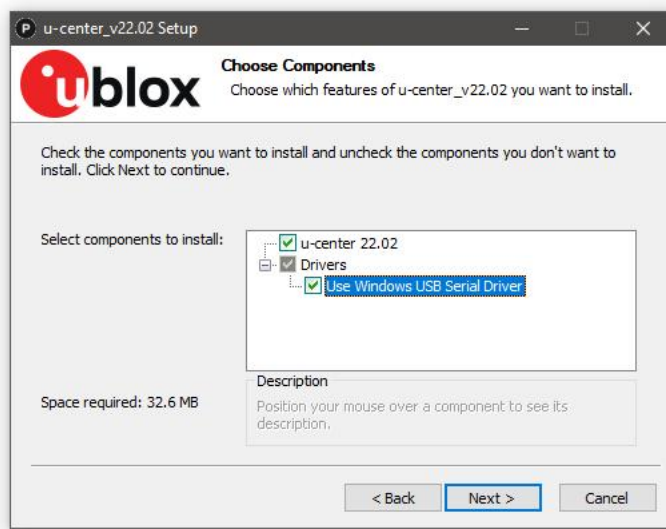
Download u-center 2, v22.03

For M9 products and below:

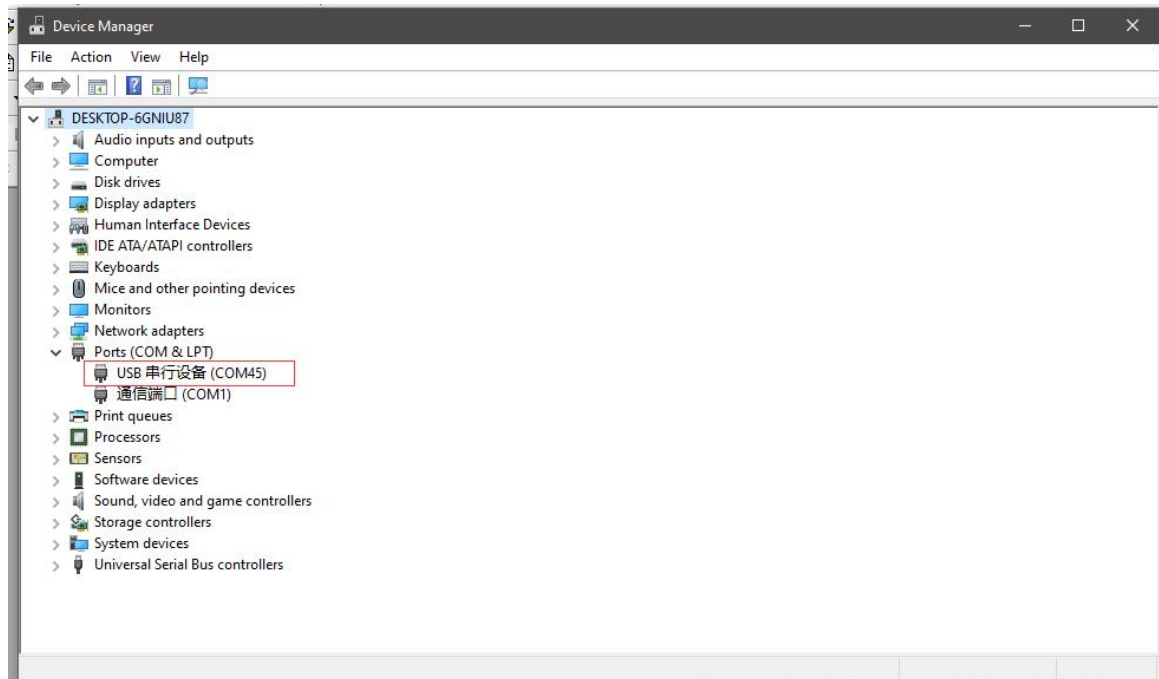
Download u-center, v22.02

| Related links |
|--|
| u-center 2 user guide |
| u-center user guide |
| u-center product summary |

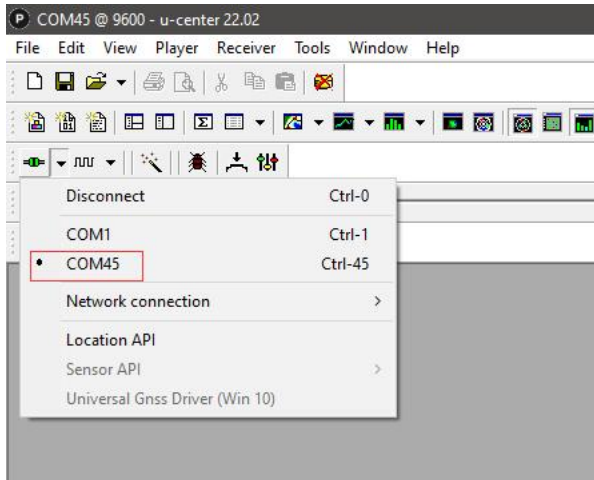
When you are installing u center, you will found the driver will be installed at the same time



3. After installed the u center, insert the USB GPS module into the PC USB port. Check BOM port in device manager



4. Open ublox u center. Click and choose COM port, please put the USB GPS module near the window or outside.

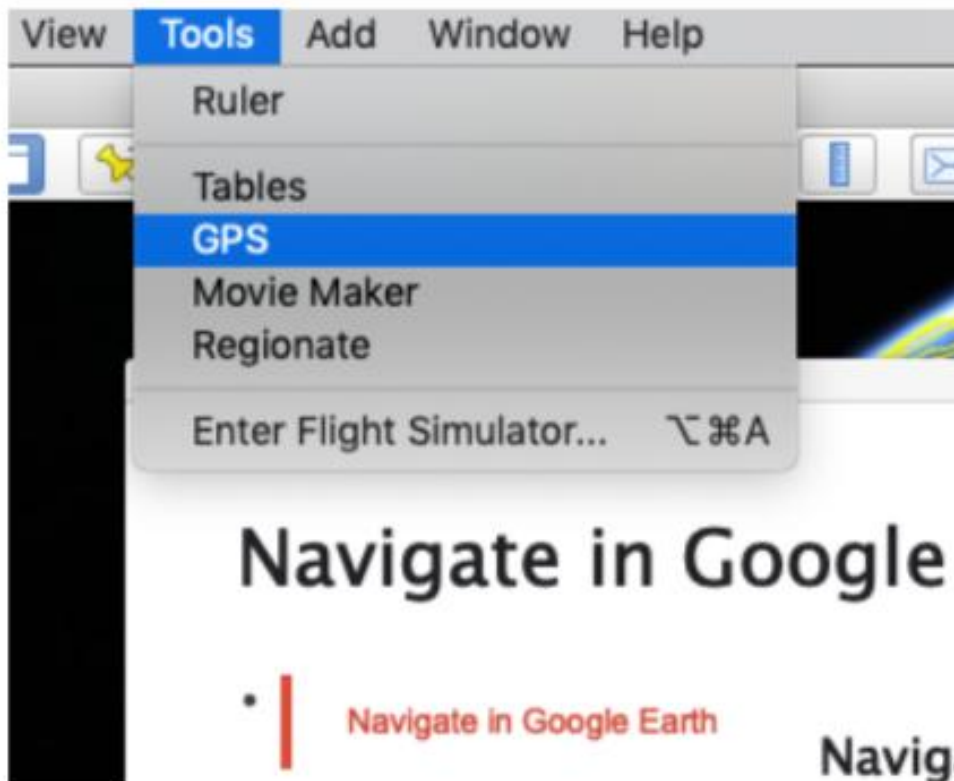


Works with google earth

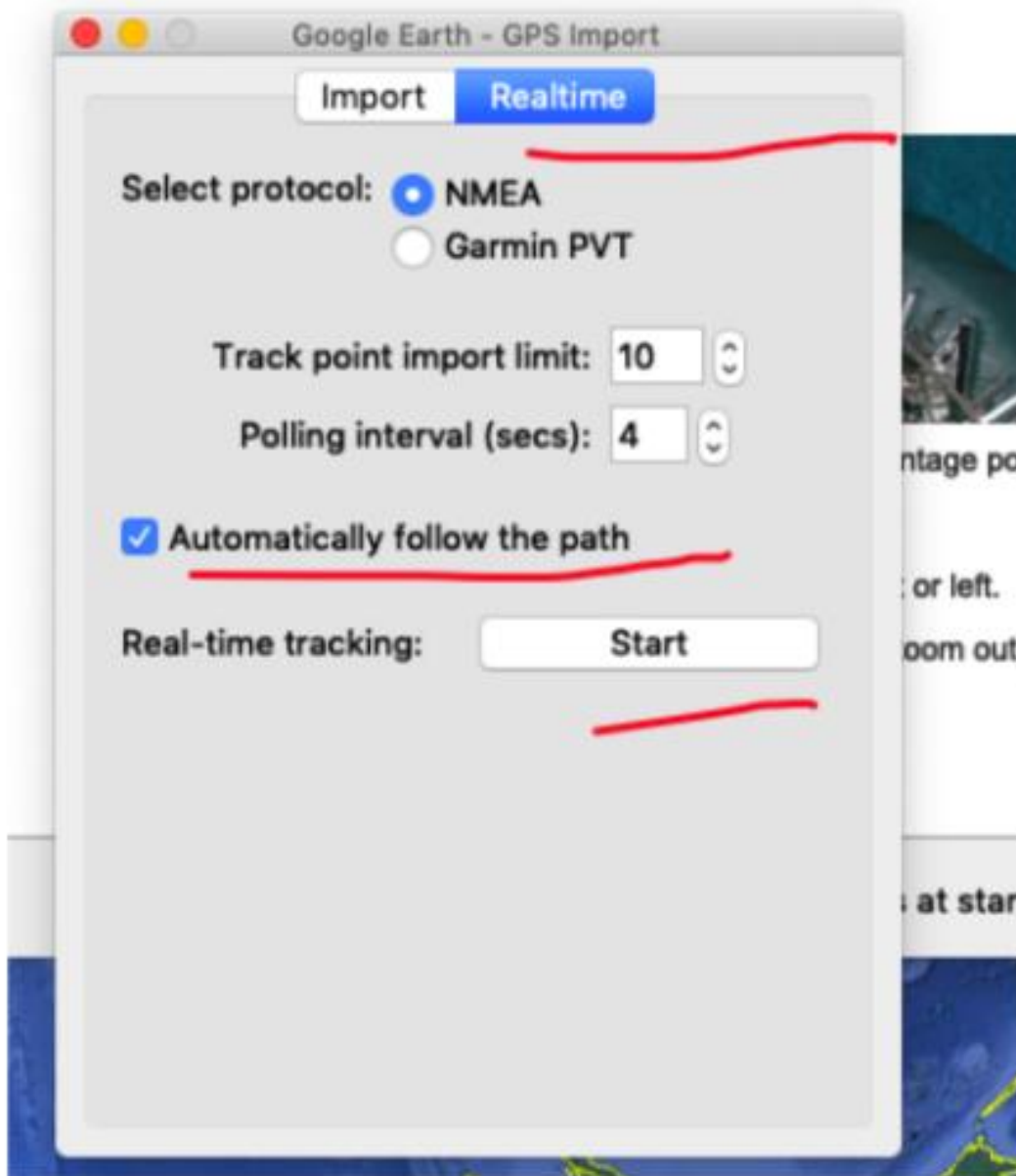
Download google earth from website

<https://www.google.com/earth/>

Open google earth, then click Tools-GPS



In the new window, choose Realtime, click Automatically follow the path, then click start



FAQ

Q: Where can I download USB sensor driver for win10?

A: You can download it from here

https://drive.google.com/drive/folders/1GYL2XF4uJD-znWuO5QrKbStqKWi-El_Y?usp=sharing

Q: How to Setup GPS for Raspberry Pi

A: Please check this video <https://youtu.be/A1zmhxcUOxw>

Q: Does it support PPS?

A: No, it does not support PSS

Q: How to use on mac?

A: <https://tinyurl.com/gps-works-on-mac>

Q: Does this unit transmit data in nmea format?

A: Yes, the data is in NMEA format

Q: Do you have raspberry pi drivers?

A: You just need plug the gps module into the raspberry pi, then it can work, the driver already in the raspberry pi

Q: Is this a 10Hz refresh? Meeting 10 updates a second?

A: Yes, it is 10hz refresh

Q: Will this work for real time tracking with Windows 10 Google Earth program on my laptop?

A: Yes, it can. You need install driver first, you can download driver and document from this link <https://www.u-blox.com/en/product/u-center>

Q: Can i use python in raspberry pi to get the GPS data?

A: Yes you can. You don't need drivers; the Linux kernel takes care of that by mounting the device as a Linux character mode device (hence the 'C' in the directory listing) and the device sends a data message including time and location every time the green light blinks. If you need help with the data format download the interface manual from https://www.u-blox.com/sites/default/files/products/documents/u-blox7-V14_RceiverDescrProtSpec_%28GPS.G7-SW-12001%29_Public.pdf

Q: Could i integrate this into my drone for gps location information?

A: Yes, you can, but you need code by yourself

Q: Does it work on a windows 10 ?

A: Yes, it can

Q: Can it work with the iPad mini 4?

A: Yes, it can

Q: Do i need any additional device or module to get gps location on raspberry pi or this tiny device alone would do the job?

A: Yes, this device will do what you want, as long as you have the software necessary, like an EFB, which can interpret the gps data. However I would not recommend this one, I bought one and it is not that good. I would suggest that you get the version which has the USB cable so you can plug it into the raspberry but move the actual receiver away from the Raspberry pi